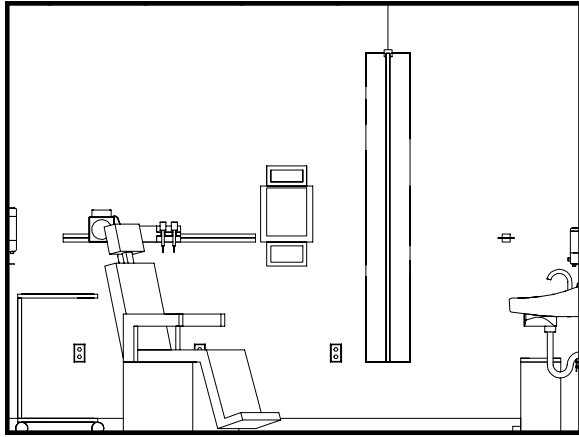


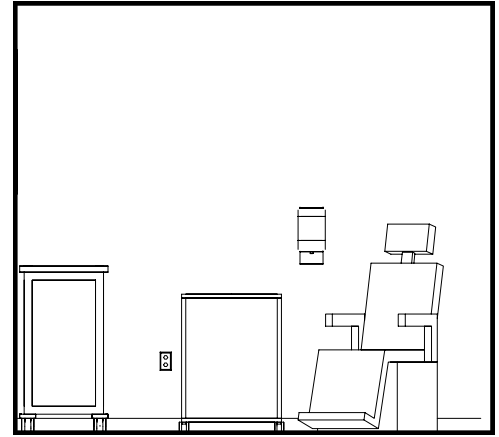
FGI GUIDELINES:

1. This room is used for physical exams prior to treatment; to implant cannulas; to remove clots from shunts; and to perform special examinations, treatment.
2. At least one examination room shall be provided.
3. The examination room shall have the following:
 - Hand-washing station
 - A counter or shelf space for writing or electronic documentation.

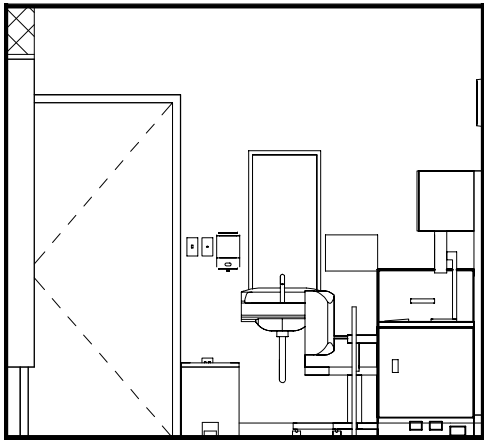
JSN	Nomenclature	Qty	Log	Cat	Util1	Util2	Util3	Util4	Util5	Util6
A1010	Telecommunication Outlet	2	A							
A1012	Telephone, Wall Mounted, 1 Line	1	A							
A1066	Mirror, Float Glass, With SS Frame	1	A		-	-	-	-	-	-
A1132	Rail, Accessory Mounting, 48"	1	A		-	-	-	-	-	-
A5075	Dispenser, Soap, Disposable	1	C		-	-	-	-	-	-
A5077	Dispenser, Hand Sanitizer, Hands free	1	C		-	-	-	-	-	-
A5080	Dispenser, Paper Towel, SS Surface Mounted	1	A		-	-	-	-	-	-
A5106	Waste Disposal Unit, Sharps w/Glove Dispenser	1	C		-	-	-	-	-	-
A5145	Hook, Garment, Double, SS, Surface Mounted	1	A		-	-	-	-	-	-
A5180	Track, Cubicle, Surface Mounted, With Curtain	1	A		-	-	-	-	-	-
A6046	Artwork, Decorative, With Frame	1	C		-	-	-	-	-	-
E0117	Workstation, Straight, Free Standing, 48" W	1	C		-	A	-	-	-	-
E0948	Cart, General Storage, Mobile, 42"H x 32"W x 22"D	1	C		-	-	-	-	-	-
F0205	Chair, Side With Arms	1	C		-	-	-	-	-	-
F0280	Chair, Swivel, Low Back	1	C		-	-	-	-	-	-
F2010	Basket, Wastepaper, Step-On	1	C		-	-	-	-	-	-
F3200	Clock, Battery, 12" Diameter	1	C		-	-	-	-	-	-
M1801	Computer, Microprocessing, w/Flat Panel Monitor	1	C		-	A	-	-	-	-
M3072	Frame, Infectious Waste Bag w/Lid	1	C		-	-	-	-	-	-
M4100	Sphygmomanometer, Aneroid, Wall Mounted	1	C		-	-	-	-	-	-
M4200	Otoscope/Ophthalmoscope, Wall Mounted	1	C		-	A	-	-	-	-
M9035	Chair/Table, Combination Unit	1	C		-	A	-	-	-	-
P3100	Lavatory, Vitreous China, Slab Type	1	A	D	-	-	-	-	-	-
U0011	Signature Pad, Electronic	1	C		-	-	-	-	-	-



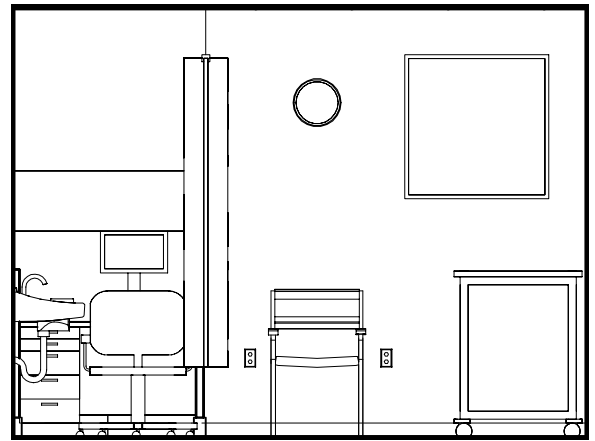
1 INTERIOR ELEVATION



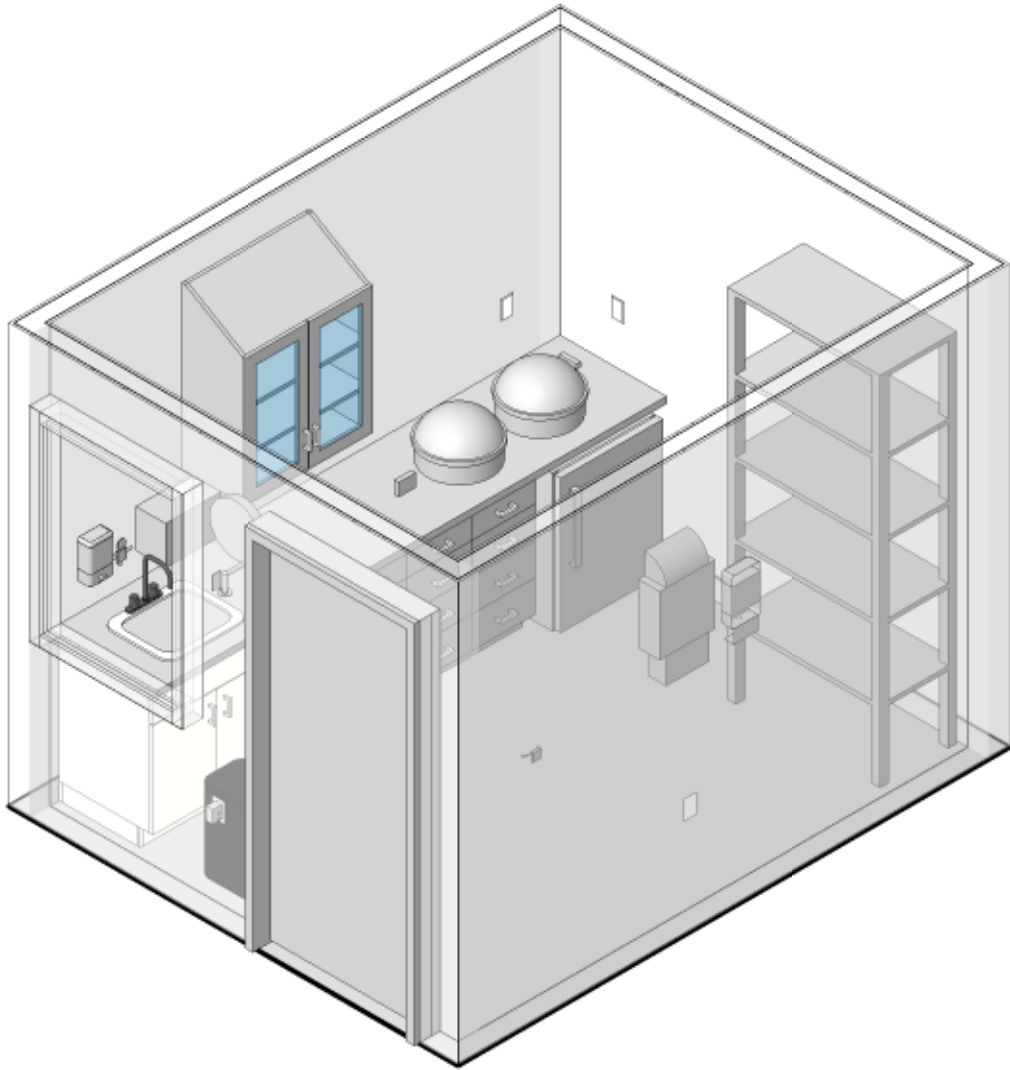
2 INTERIOR ELEVATION

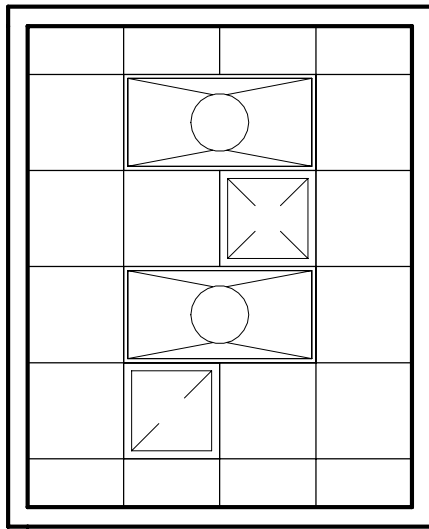


3 INTERIOR ELEVATION



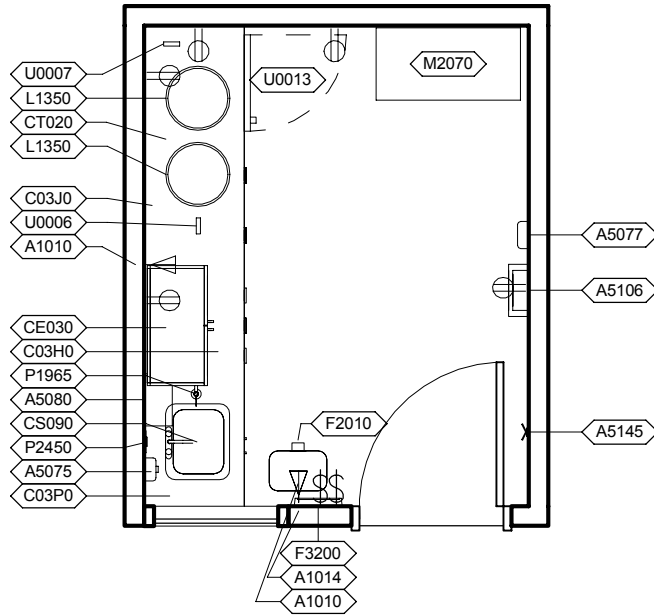
4 INTERIOR ELEVATION



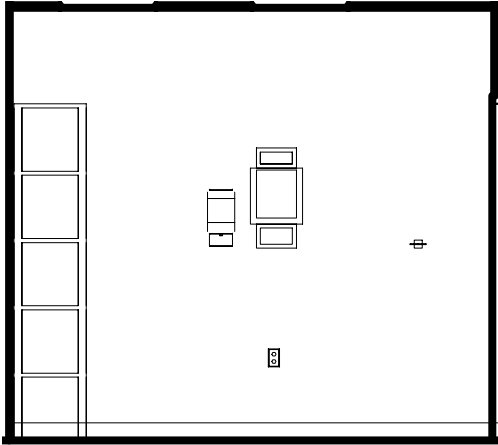


FGI GUIDELINES:

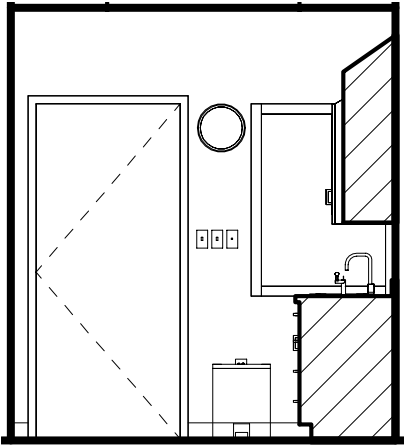
1. Functions within the lab include processing of blood and urine samples.
2. Space should include:
 - Tech Workstation
 - Countertop Space
 - Hand Washing Sink
 - Under Counter Refrigerator
 - Data Drops



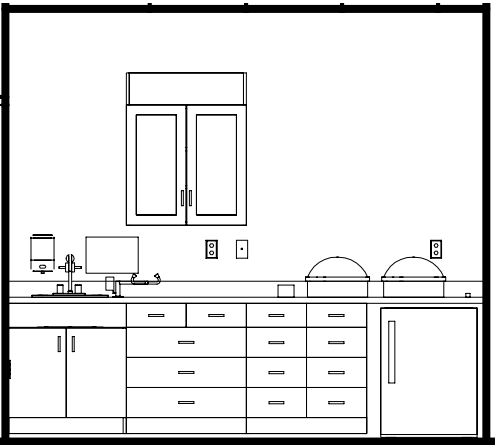
JSN	Nomenclature	Qty	Log Cat	Util1	Util2	Util3	Util4	Util5	Util6
A1010	Telecommunication Outlet	2	A						
A1014	Telephone, Wall Mounted, 1 Line, with Speaker	1	A						
A5075	Dispenser, Soap, Disposable	1	C	-	-	-	-	-	-
A5077	Dispenser, Hand Sanitizer, Hands free	1	C	-	-	-	-	-	-
A5080	Dispenser, Paper Towel, SS Surface Mounted	1	A	-	-	-	-	-	-
A5106	Waste Disposal Unit, Sharps w/Glove Dispenser	1	C	-	-	-	-	-	-
A5145	Hook, Garment, Double, SS, Surface Mounted	1	A	-	-	-	-	-	-
C03H0	Cabinet, U/C/B, 1 Shelf, 2 Half DR, 2 DO, 36x30x22	1	A	-	-	-	-	-	-
C03J0	Cabinet, U/C/B, 8 Half Drawers, 36x30x22	1	A	-	-	-	-	-	-
C03P0	Cabinet, Sink, U/C/B, 2 Door, 30" W	1	A	-	-	-	-	-	-
CE030	Cabinet, W/H, 2 SH, 2 GDO, Sloping Top, 38x30x13	1	A	-	-	-	-	-	-
CS090	Sink, SS, Single Compartment, 7.5x19x16 ID	1	A	D	-	-	-	-	-
CT020	Cabinet, U/C/B, 8 Half Drawers, 36x30x22	1	C	-	-	-	-	-	-
F2010	Basket, Wastepaper, Step-On	1	C	-	-	-	-	-	-
F3200	Clock, Battery, 12" Diameter	1	C	-	-	-	-	-	-
L1350	Centrifuge, Table, Small, 3200 RPM, 6 Place	2	C	-	A	-	-	-	-
M2070	Shelving, Storage, 77hx36wx18d	1	C	-	-	-	-	-	-
P1965	Eyewash, Eye/Face, Sink Mounted, Hands-free	1	A	A	-	-	-	-	-
P2450	Valve, Mixing, Thermostatic	1	A	A	-	-	-	-	-
U0006	Glucometer, Handheld, Battery Powered	1	C	-	-	-	-	-	-
U0007	Thermometer w/ Glykol Probe, battery powered	1	C	-	-	-	-	-	-
U0013	Refrigerator, U/C, 5 Cu Ft	1	C	-	a	-	-	-	-



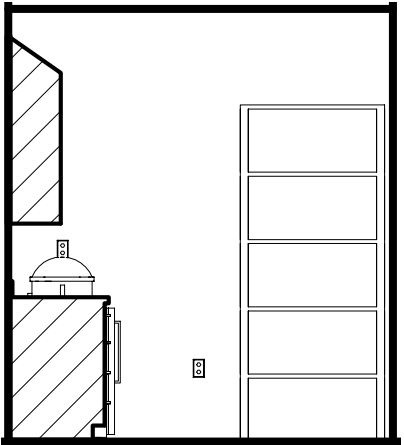
1 INTERIOR ELEVATION



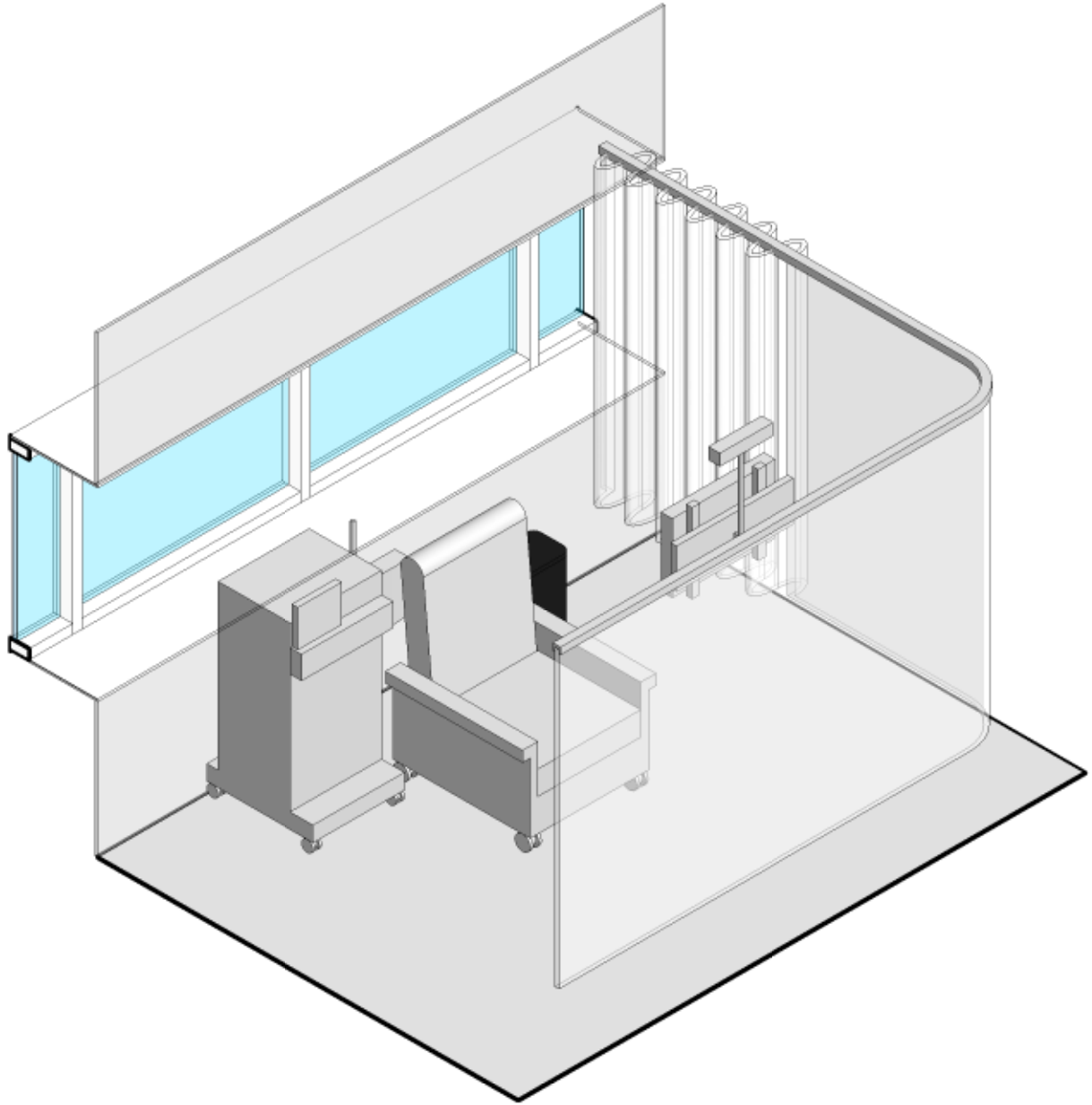
2 INTERIOR ELEVATION

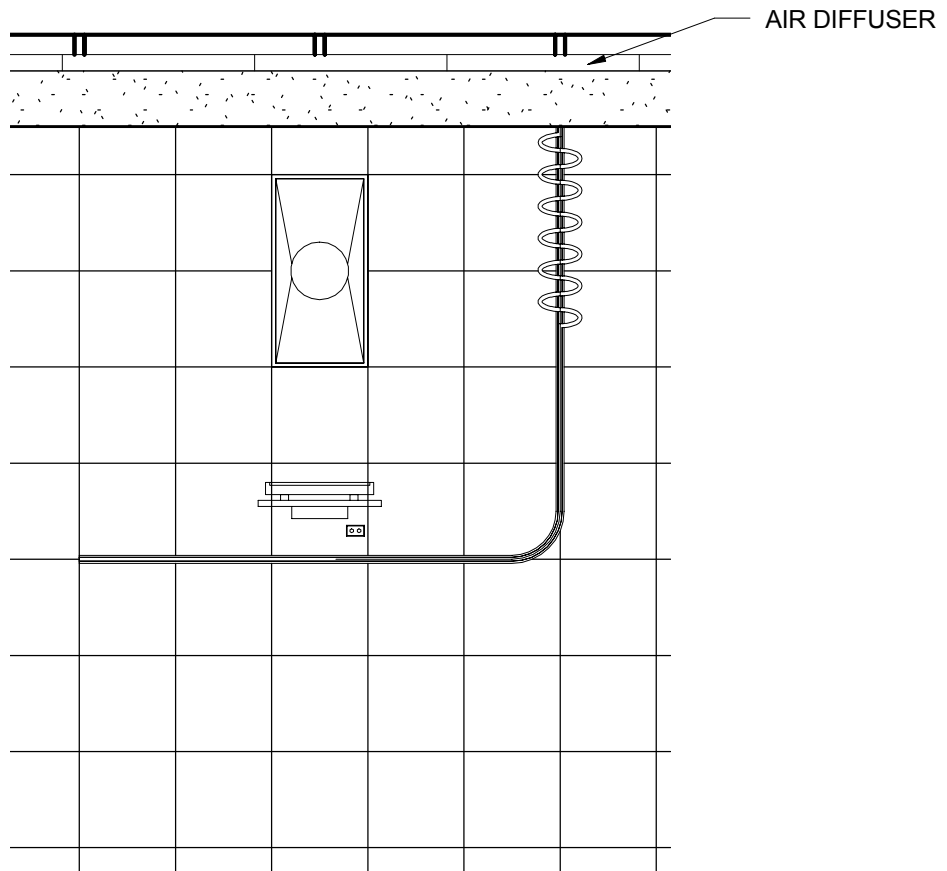


3 INTERIOR ELEVATION



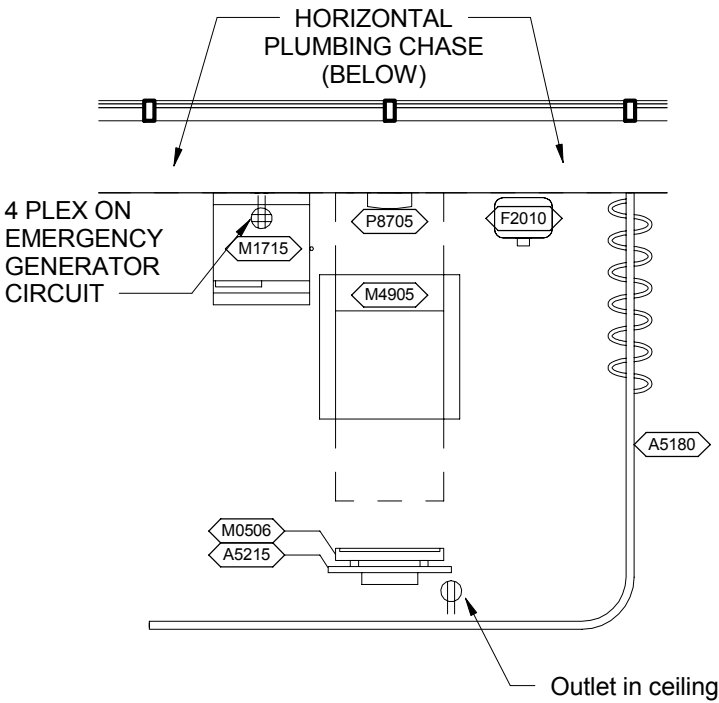
4 INTERIOR ELEVATION



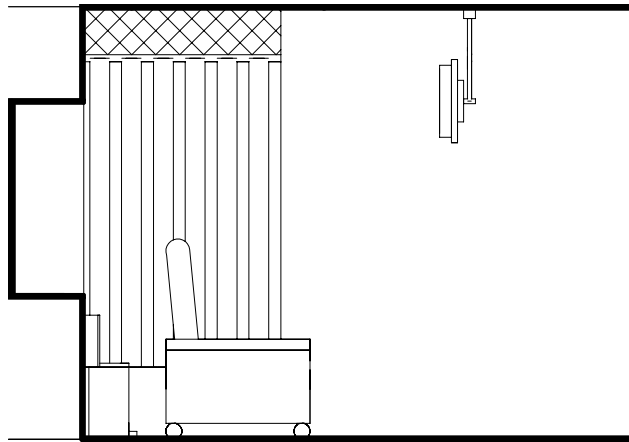


FGI GUIDELINES:

1. Individual patient treatment areas shall contain at least 80 square feet (7.43 Square meters).
2. There shall be a clear dimension of at least 4 feet (1.22 meters) between dialysis chairs.
3. The open unit shall be designed to provide privacy for each patient.

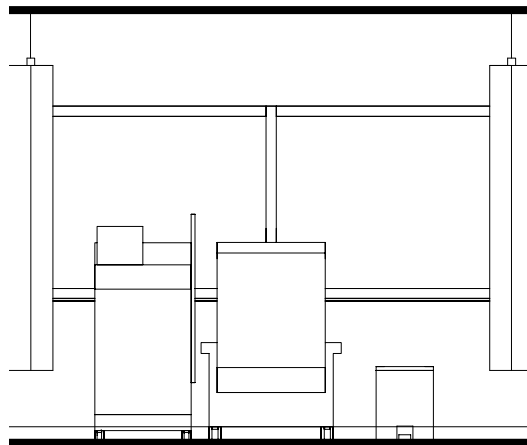


JSN	Nomenclature	Qty	Log Cat	Util1	Util2	Util3	Util4	Util5	Util6
A5077	Dispenser, Hand Sanitizer, Hands free	1	C	-	-	-	-	-	-
A5106	Waste Disposal Unit, Sharps w/Glove Dispenser	1	C	-	-	-	-	-	-
A5180	Track, Cubicle, Surface Mounted, With Curtain	1	A	-	-	-	-	-	-
A5215	Bracket, Television, Ceiling Mounted	1	B	-	-	-	-	-	-
F2010	Basket, Wastepaper, Step-On	1	C	-	-	-	-	-	-
M0506	Television, Flat Screen	1	C	-	A	-	-	-	-
M1715	Hemodialysis Unit, Hollow Fiber or Plate	1	C	E	A	-	-	-	-
M4905	Chair, Dialysis	1	C	-	-	-	-	-	-
P8705	Dialysis Box, Recessed, Single Valve	1	A	B	-	-	-	-	-



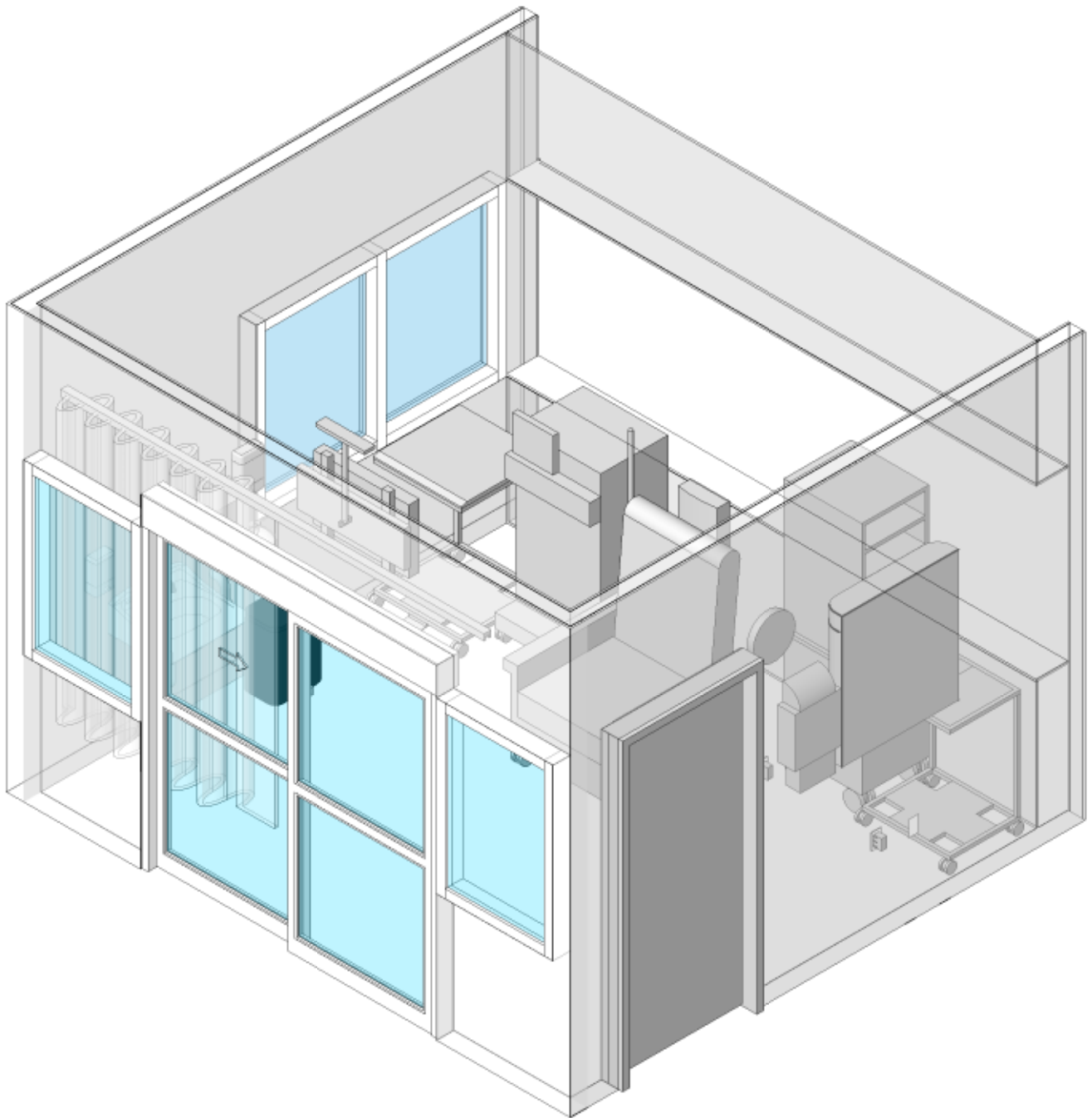
1

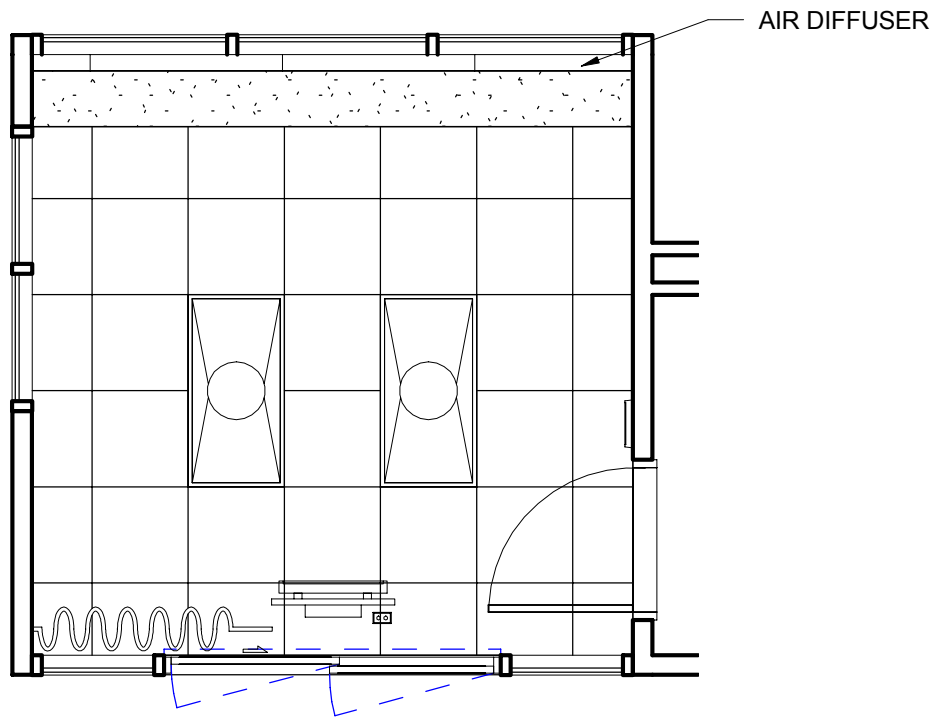
INTERIOR ELEVATION



2

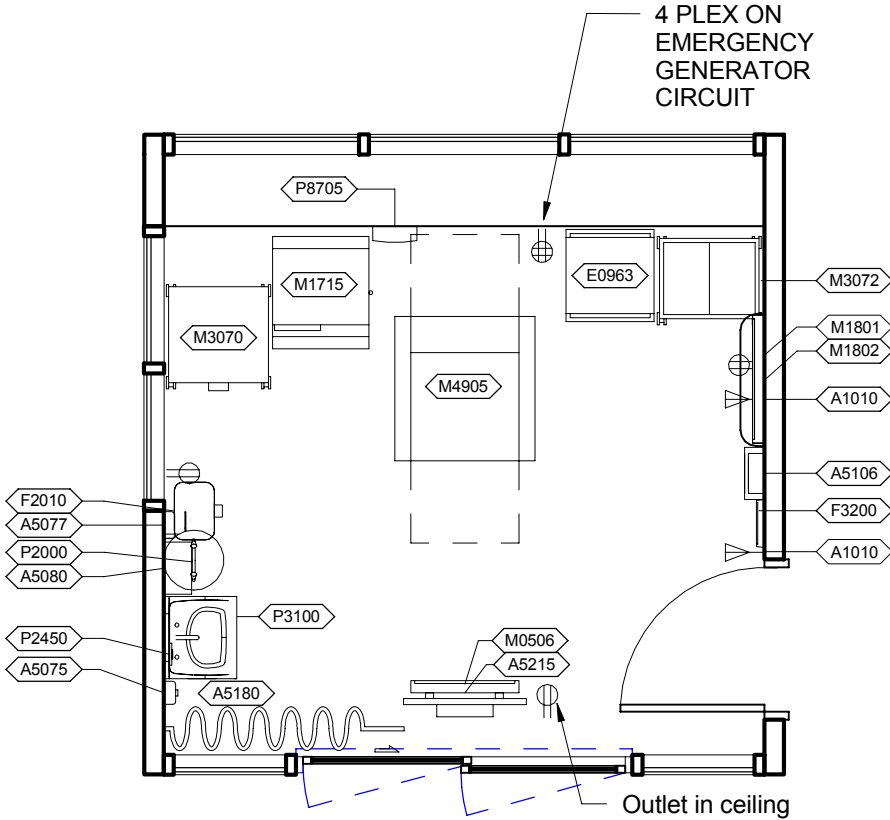
INTERIOR ELEVATION



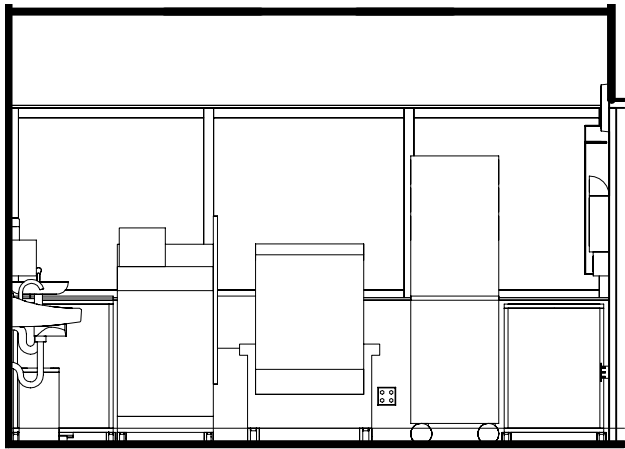


FGI GUIDELINES:

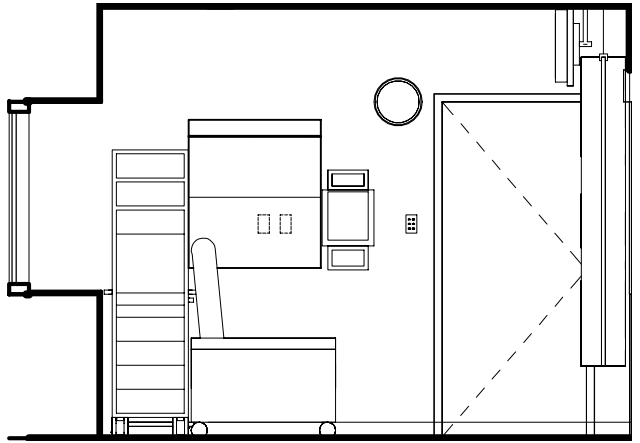
1. Space shall be provided for a private room for hemodialysis patients who are hepatitis B antigen-positive.
2. Facilities that hemodialyze patients who are hepatitis B surface antigen-positive shall have at least one separate area with walls that have a minimum height of five feet for hemodialysis treatment of those patients.
3. This space shall be flexible to accommodate a stretcher.
3. The separation area shall allow for direct observation of the patient by staff during treatment via a sliding glass door.
5. This room may accommodate a patient who becomes agitated or causes anxiety for other patients.
6. The separation area shall contain a hand-washing station.



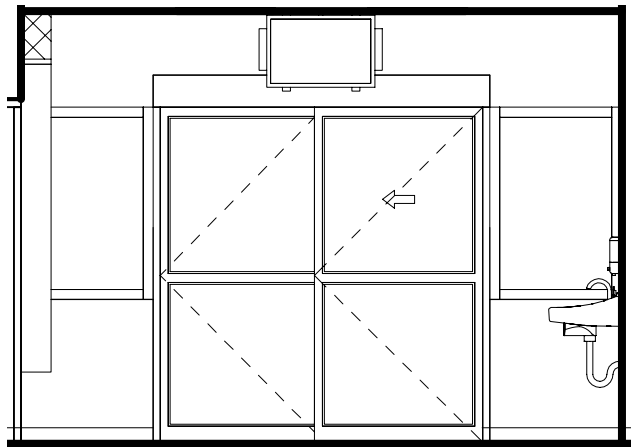
JSN	Nomenclature	Qty	Log Cat	Util1	Util2	Util3	Util4	Util5	Util6
A1010	Telecommunication Outlet	2	A						
A5075	Dispenser, Soap, Disposable	1	C	-	-	-	-	-	-
A5077	Dispenser, Hand Sanitizer, Hands free	1	C	-	-	-	-	-	-
A5080	Dispenser, Paper Towel, SS Surface Mounted	1	A	-	-	-	-	-	-
A5106	Waste Disposal Unit, Sharps w/Glove Dispenser	1	C	-	-	-	-	-	-
A5180	Track, Cubicle, Surface Mounted, With Curtain	1	A	-	-	-	-	-	-
A5215	Bracket, Television, Ceiling Mounted	1	B	-	-	-	-	-	-
E0963	Cart, General Storage, Mobile	1	C	-	-	-	-	-	-
F2010	Basket, Wastepaper, Step-On	1	C	-	-	-	-	-	-
F3200	Clock, Battery, 12" Diameter	1	C	-	-	-	-	-	-
M0506	Television, Flat Screen	1	C	-	A	-	-	-	-
M1715	Hemodialysis Unit, Hollow Fiber or Plate	1	C	E	A	-	-	-	-
M1801	Computer, Microprocessing, w/Flat Panel Monitor	1	C	-	A	-	-	-	-
M1802	Work Station, Computer, Retractable, Wall Mounted	1	C	-	-	-	-	-	-
M3070	Hamper, Linen, Mobile, w/Lid	1	C	-	-	-	-	-	-
M3072	Frame, Infectious Waste Bag w/Lid	1	C	-	-	-	-	-	-
M4905	Chair, Dialysis	1	C	-	-	-	-	-	-
P2000	Eyewash, Wall Mounted, Hands-Free	1	A	A	B	-	-	-	-
P2450	Valve, Mixing, Thermostatic	1	A	A	-	-	-	-	-
P3100	Lavatory, Vitreous China, Slab Type	1	A	D	-	-	-	-	-
P8705	Dialysis Box, Recessed, Single Valve	1	A	B	-	-	-	-	-



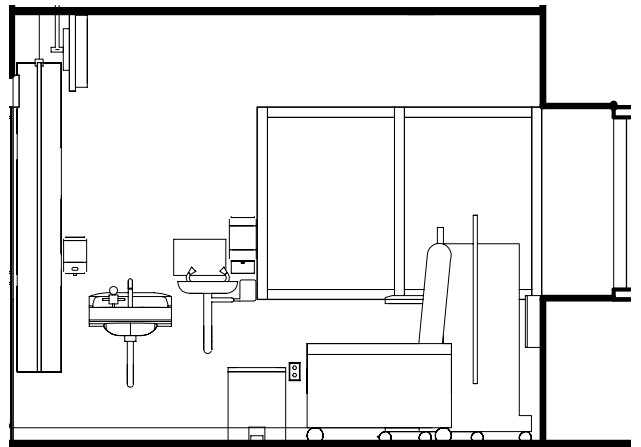
1 INTERIOR ELEVATION



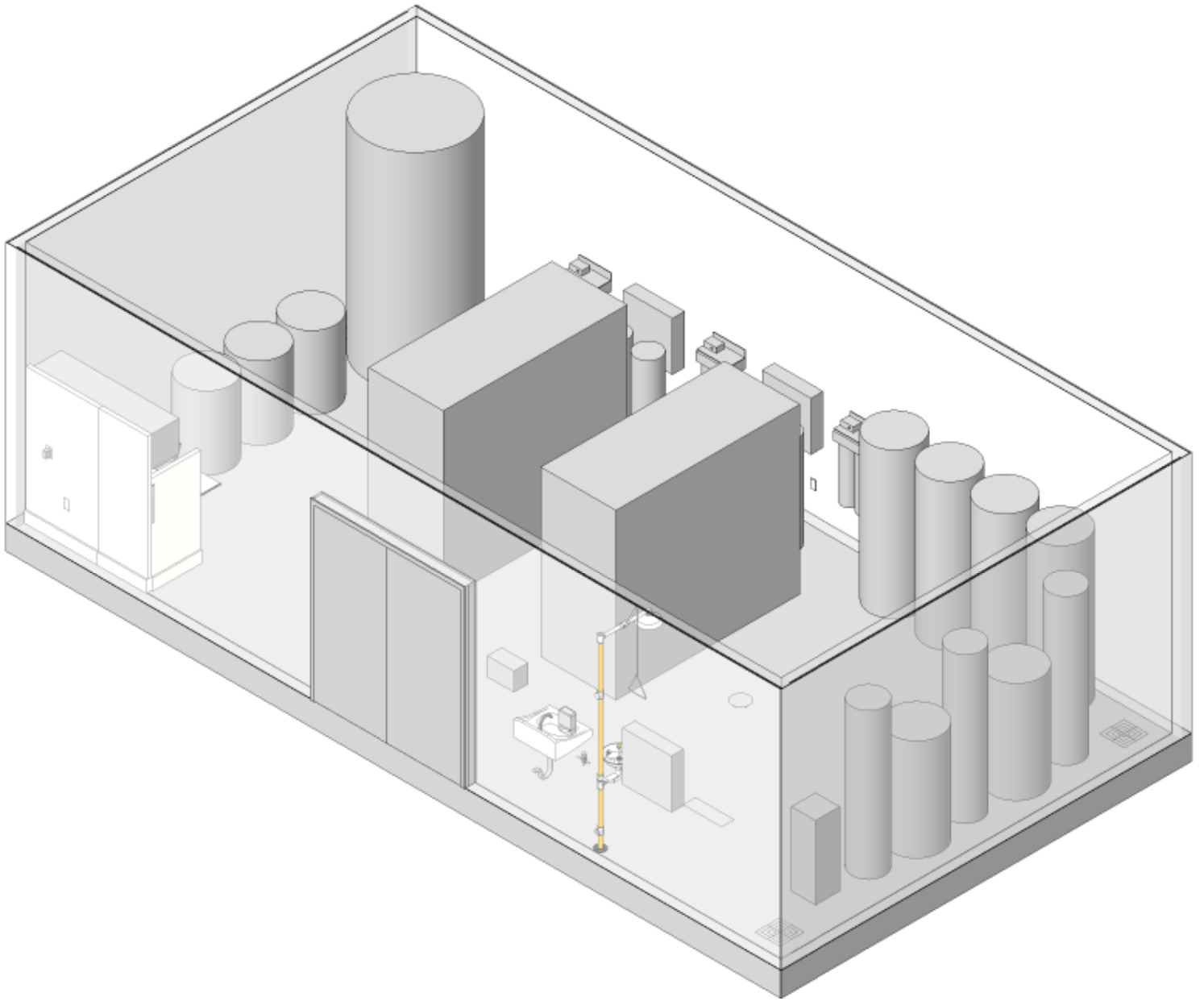
2 INTERIOR ELEVATION

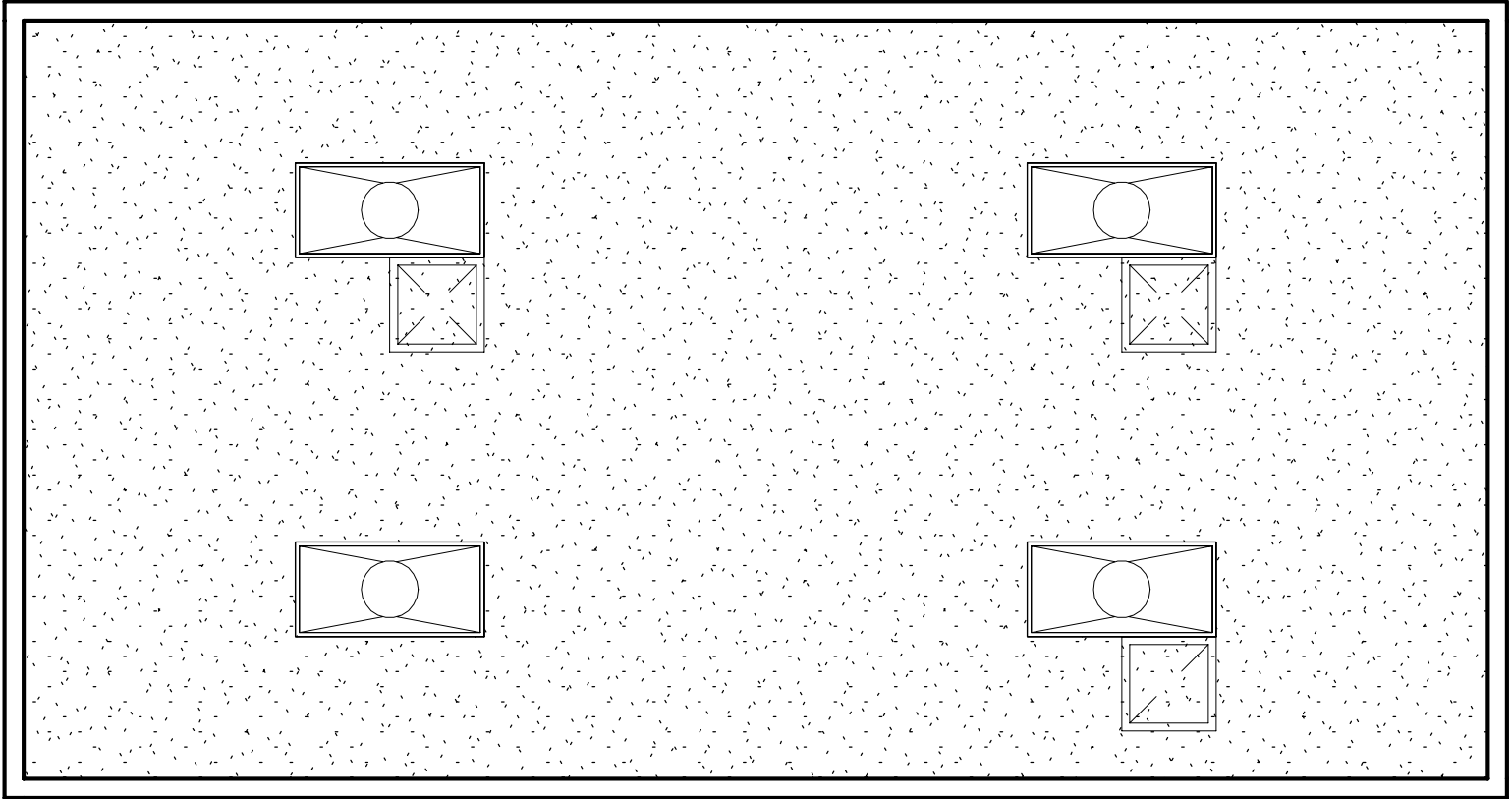


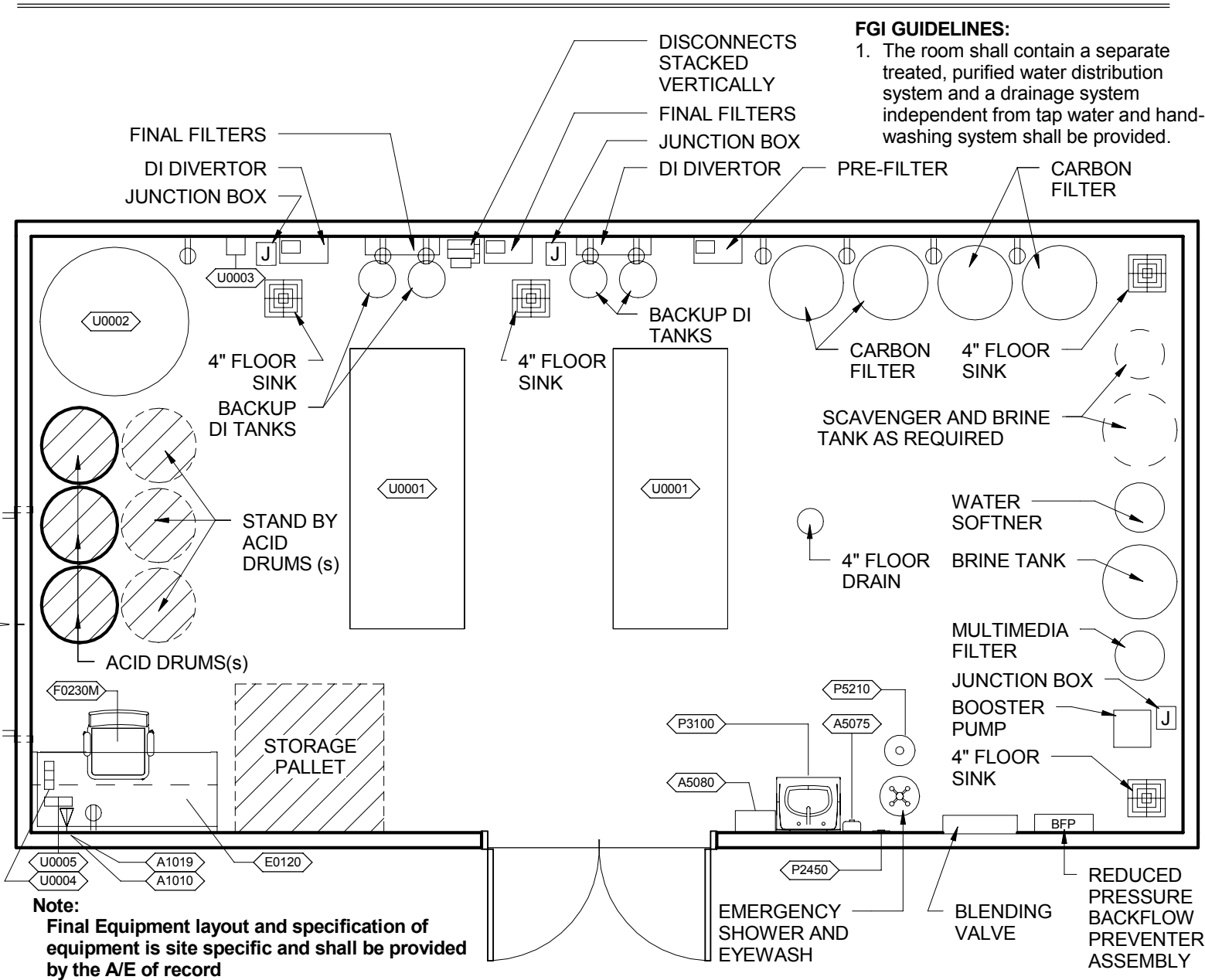
3 INTERIOR ELEVATION



4 INTERIOR ELEVATION



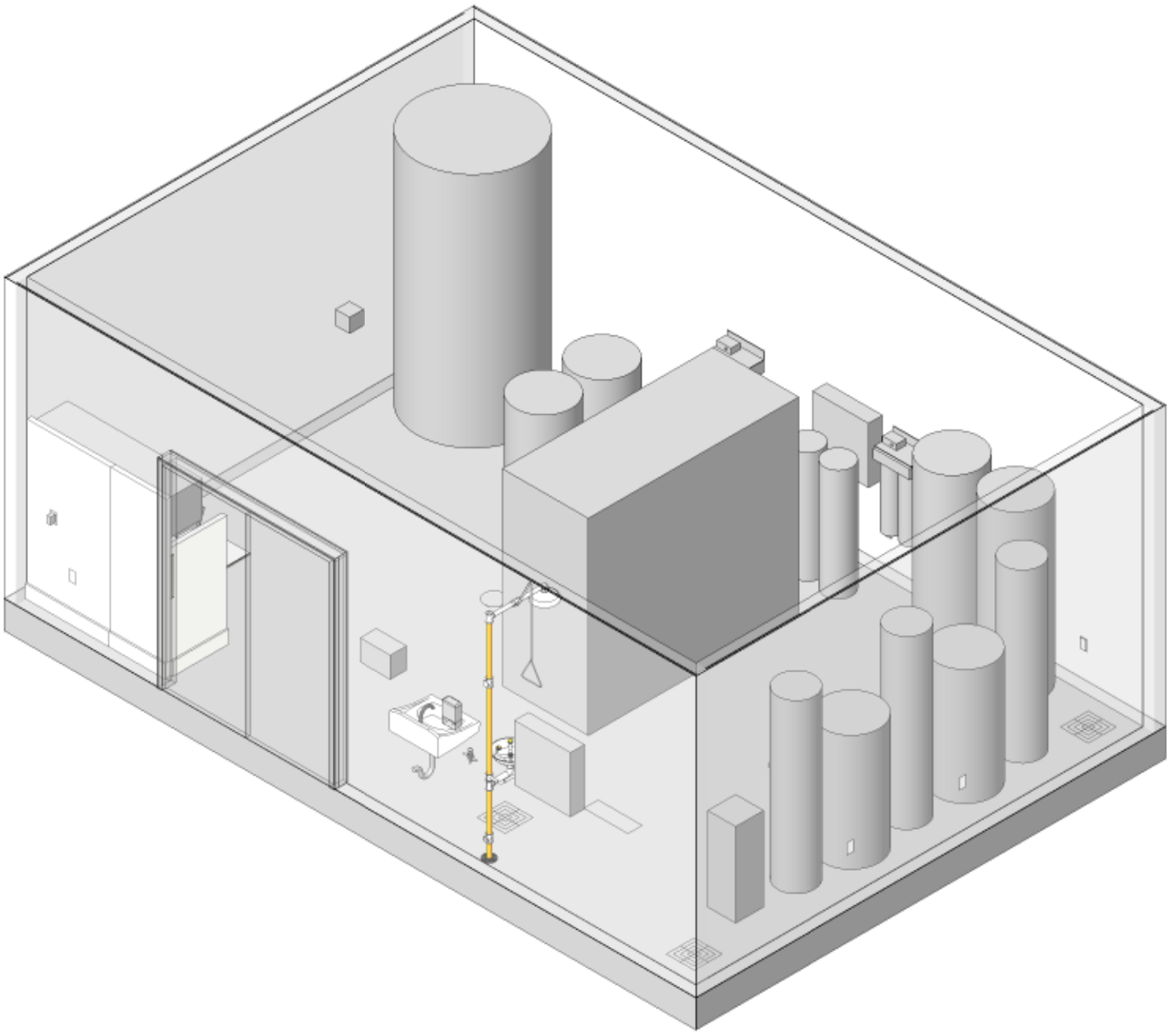


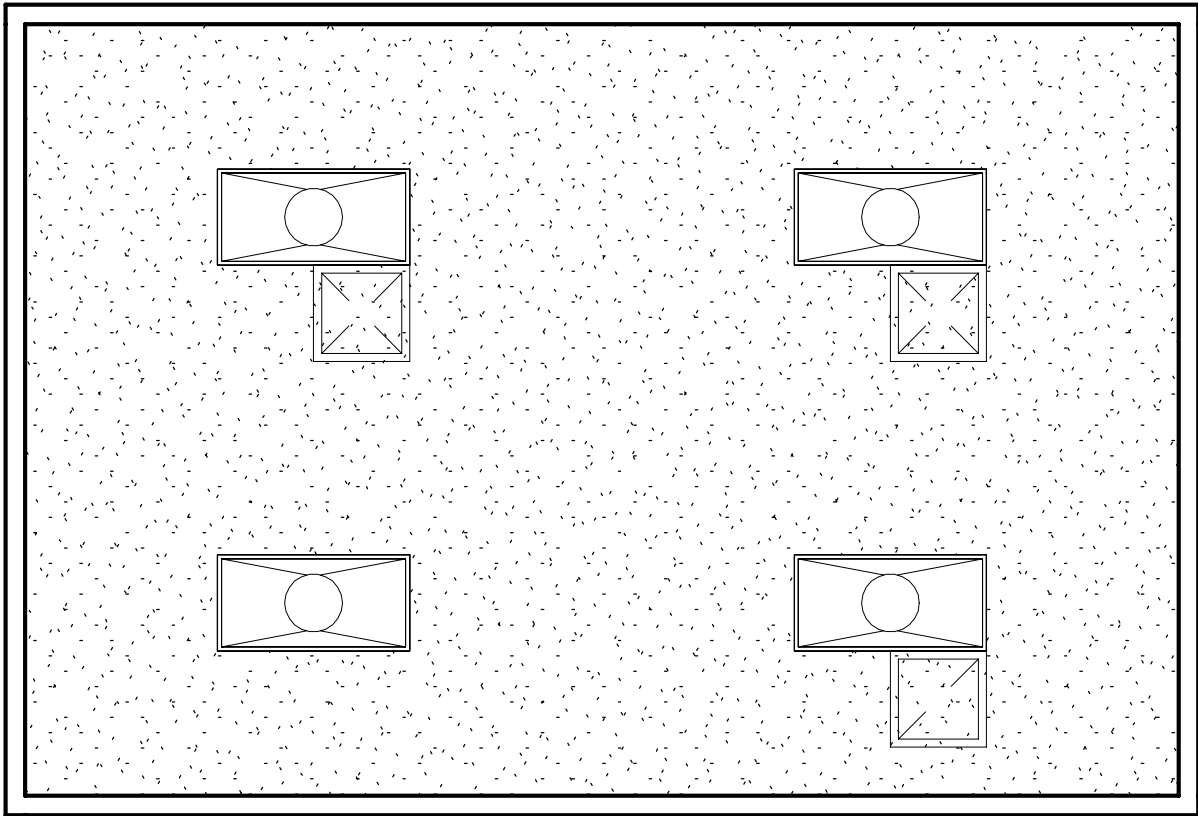


FGI GUIDELINES:
 1. The room shall contain a separate treated, purified water distribution system and a drainage system independent from tap water and hand-washing system shall be provided.

Note:
 Final Equipment layout and specification of equipment is site specific and shall be provided by the A/E of record

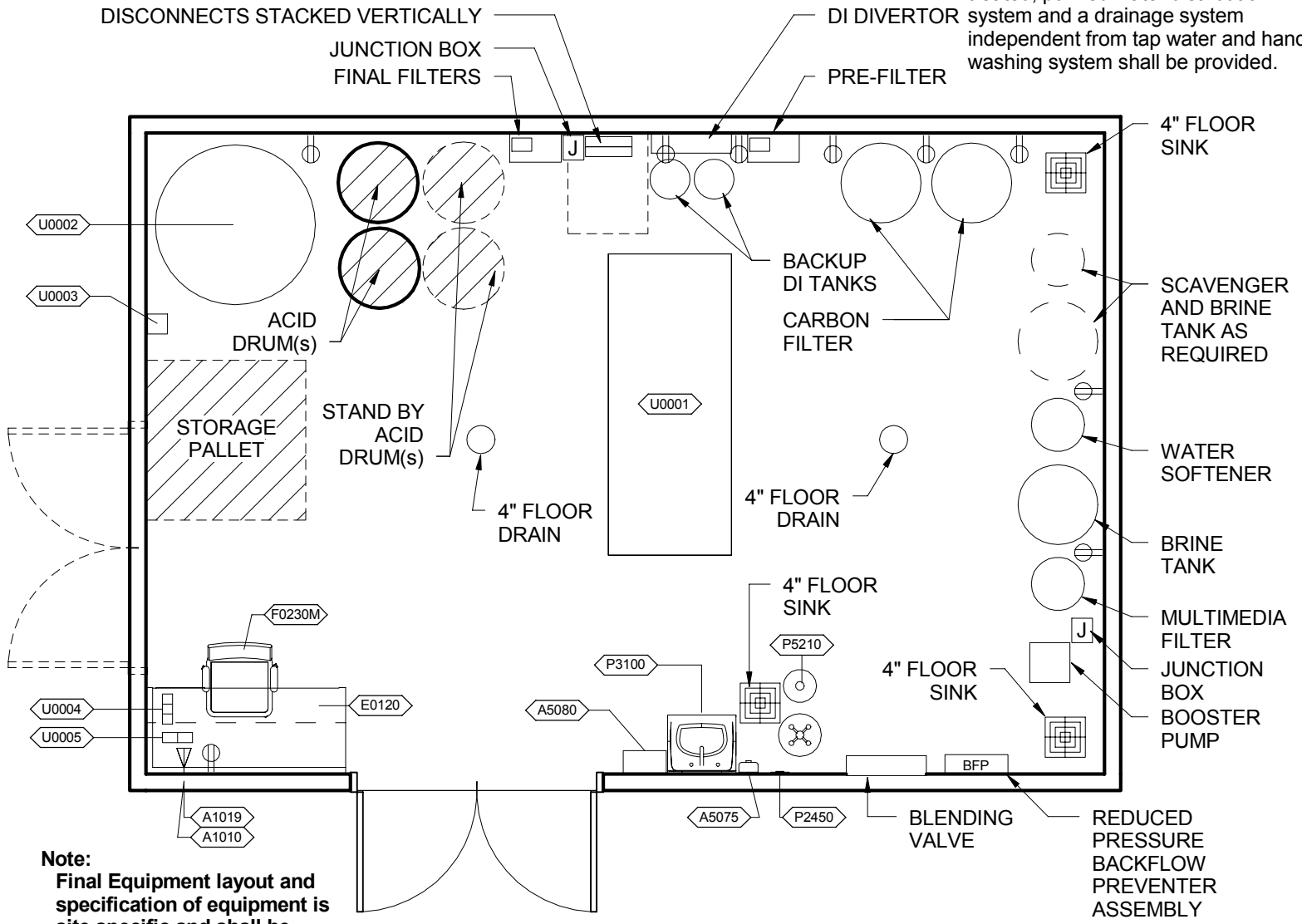
JSN	Nomenclature	Qty	Log Cat	Util1	Util2	Util3	Util4	Util5	Util6
A1010	Telecommunication Outlet	1	A						
A1019	Telephone, Wall Mounted, Multi-Line, Cordless	1	A						
A5075	Dispenser, Soap, Disposable	1	C	-	-	-	-	-	-
A5080	Dispenser, Paper Towel, SS Surface Mounted	1	A	-	-	-	-	-	-
E0120	Workstation, Straight, Free Standing, 60" W	1	A	-	-	-	-	-	-
F0230M	Chair, Drafting, Rotary	1	C	-	-	-	-	-	-
P2450	Valve, Mixing, Thermostatic	1	A	A	-	-	-	-	-
P3100	Lavatory, Vitreous China, Slab Type	1	A	D	-	-	-	-	-
P5210	Shower, Safety, Freestanding, With Eye/Face Wash	1	C						
U0001	Direct Feed, RO Water	2	C	D	G	-	-	-	-
U0002	Distribution System, Acid	1	C	-	A	-	-	-	-
U0003	Pump, Drum / Barrel	1	-	-	A	-	-	-	-
U0004	Meter, Chlorine, Battery Powered, Kit	3	C	-	-	-	-	-	-
U0005	Meter, Water Quality, Multi Paramters, Battery Powered	2	C	-	-	-	-	-	-





FGI GUIDELINES:

1. The room shall contain a separate treated, purified water distribution system and a drainage system independent from tap water and hand-washing system shall be provided.



Note:
Final Equipment layout and specification of equipment is site specific and shall be provided by the A/E of record

JSN	Nomenclature	Qty	Log Cat	Util1	Util2	Util3	Util4	Util5	Util6
A1010	Telecommunication Outlet	1	A						
A1019	Telephone, Wall Mounted, Multi-Line, Cordless	1	A						
A5075	Dispenser, Soap, Disposable	1	C	-	-	-	-	-	-
A5080	Dispenser, Paper Towel, SS Surface Mounted	1	A	-	-	-	-	-	-
E0120	Workstation, Straight, Free Standing, 60" W	1	A	-	-	-	-	-	-
F0230M	Chair, Drafting, Rotary	1	C	-	-	-	-	-	-
P2450	Valve, Mixing, Thermostatic	1	A	A	-	-	-	-	-
P3100	Lavatory, Vitreous China, Slab Type	1	A	D	-	-	-	-	-
P5210	Shower, Safety, Freestanding, With Eye/Face Wash	1	C						
U0001	Direct Feed, RO Water	1	C	D	G	-	-	-	-
U0002	Distribution System, Acid	1	C	-	A	-	-	-	-
U0003	Pump, Drum / Barrel	1	-	-	A	-	-	-	-
U0004	Meter, Chlorine, Battery Powered, Kit	3	C	-	-	-	-	-	-
U0005	Meter, Water Quality, Multi Paramters, Battery Powered	2	C	-	-	-	-	-	-