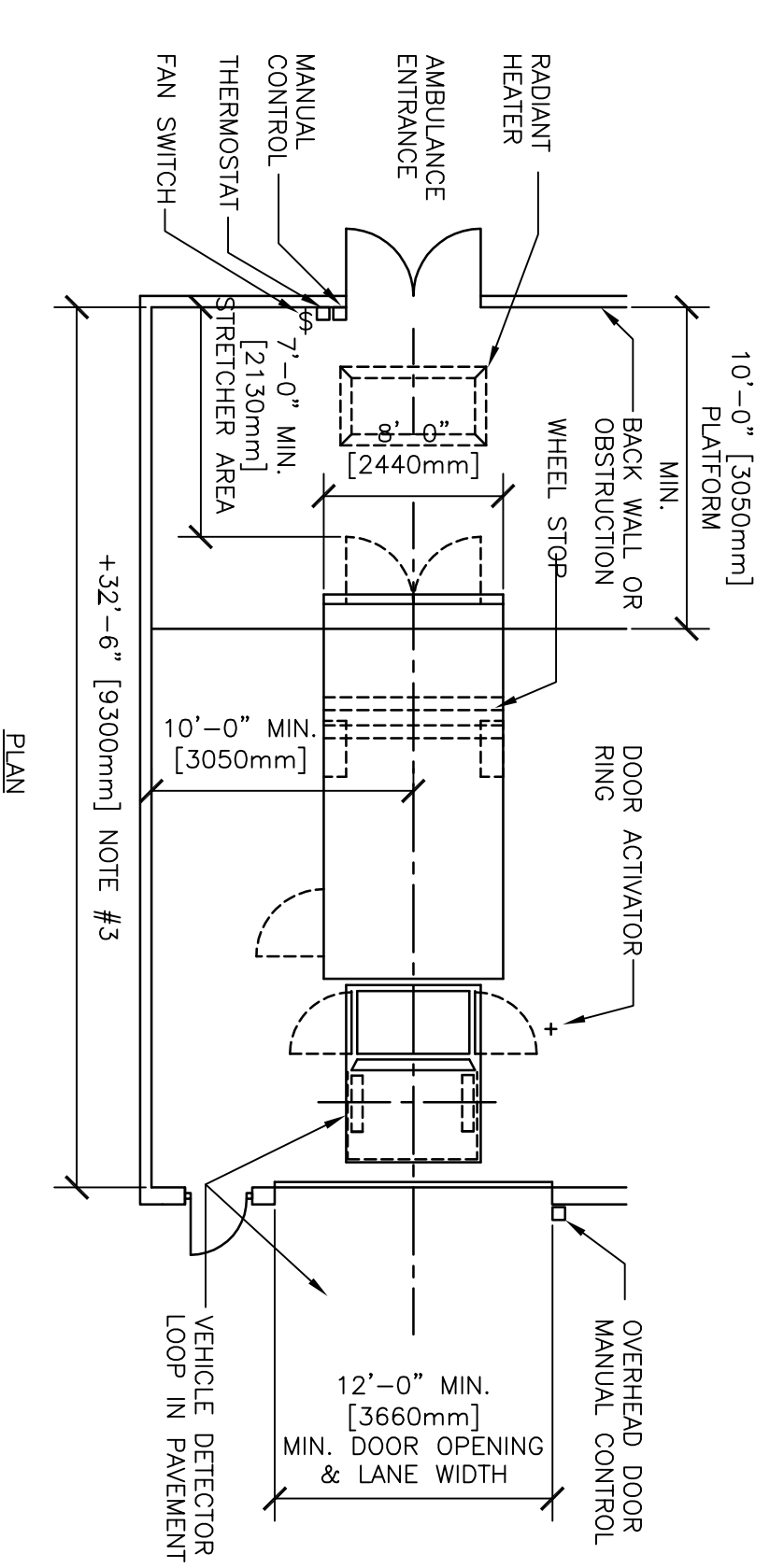


NOTES:

1. THE ARCHITECT/ENGINEER SHALL VERIFY THAT THESE DIMENSIONS CONFIRM TO THE REQUIREMENTS OF THE VEHICLE SIZE USED AT THE PROJECT LOCATION.
2. INCLUDES ROOF MOUNTED EQUIPMENT, DOES NOT INCLUDE TWO-WAY RADIO ANTENNA.
3. THIS DIMENSION IS A MINIMUM RECOMMENDATION. THE COVERED AREA SHOULD BE DESIGNED IN RESPONSE TO THE SPECIFIC CONDITIONS OF EACH PROJECT: CLIMATE, ORIENTATION, SITE, ETC.
4. 10'-0" [3050mm] IS ABSOLUTE MINIMUM PER VA DESIGN GUIDES. PREFERENCE SHALL BE GIVEN TO INCREASED CLEARANCE TO ALLOW FOR VARIATIONS IN VEHICLE DESIGN, LIGHTS, GROUND SLOPE, ETC.



PLAN

DETAIL TITLE / AMBULANCE ENTRANCE DETAILS WITH ENCLOSURE

SCALE :NONE

DATE ISSUED: DECEMBER 2008

CAD DETAIL NO.: SD001015-03.DWG