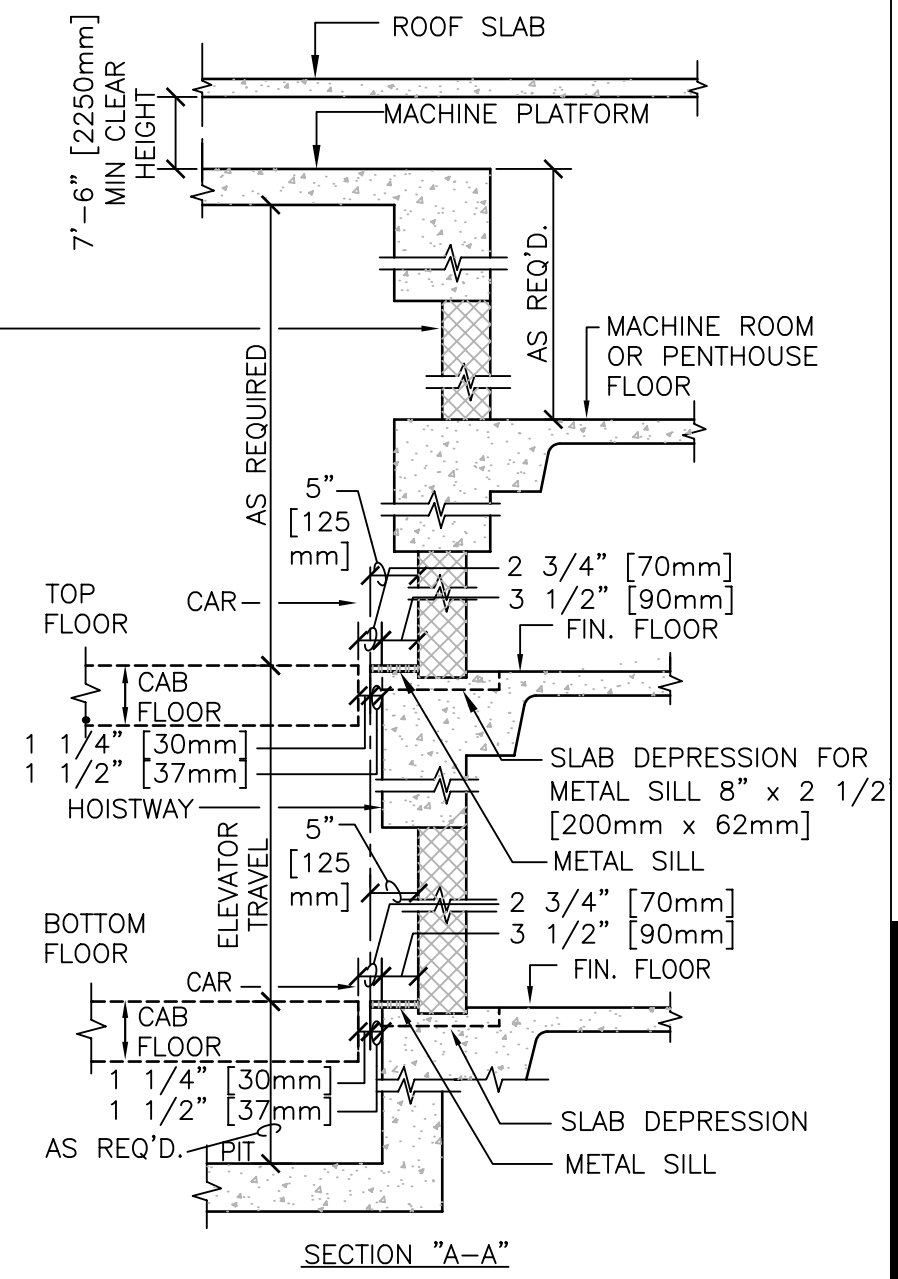
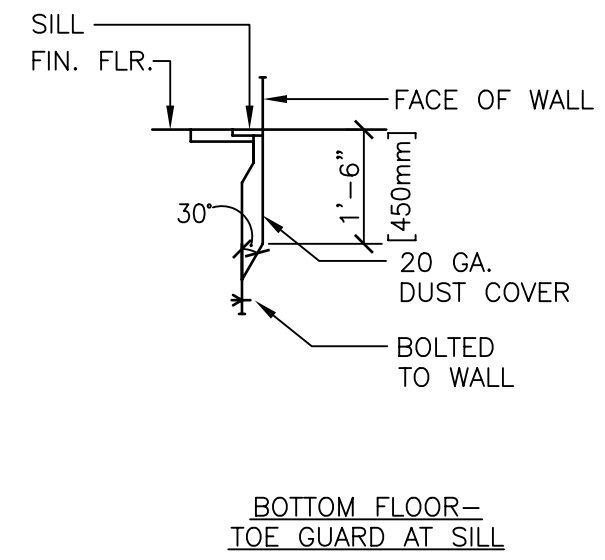
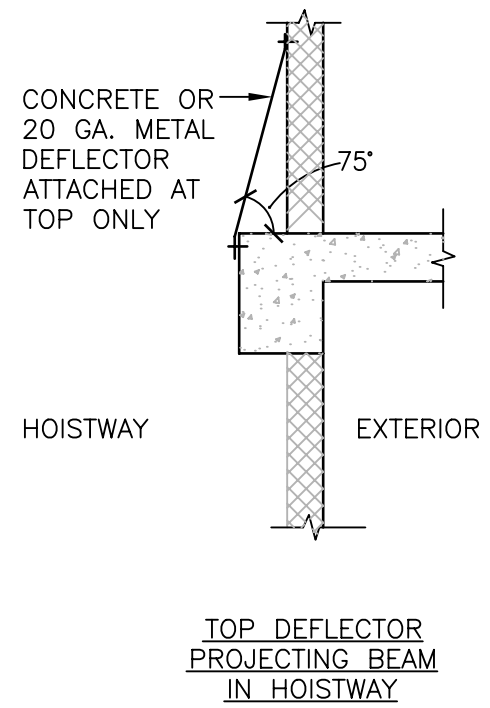
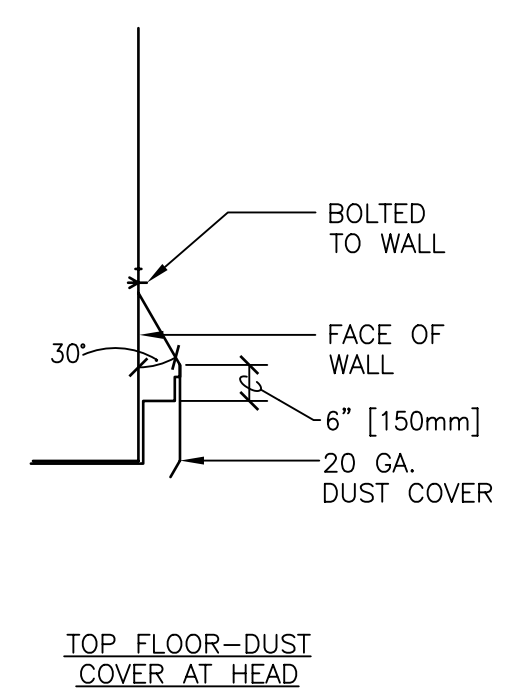


- NOTES:**
1. COORDINATE WALL TYPE AND FINISH WITH ARCHITECTURAL DRAWINGS.
 2. SEE STRUCTURAL DRAWINGS FOR ACTUAL SIZE AND LOCATION OF COLUMNS, BEAMS AND SLABS.
 3. SEE 14 21 00-04.DWG FOR DETAILS OF HORIZONTAL SLIDING CENTER OPENING DOORS.
 4. CONCRETE MACHINE ROOM FLOOR(S) NOT TO BE POURED UNTIL MACHINES ARE ON MACHINE BEAMS.
 5. MACHINE ROOM - APPROXIMATELY 225 SQ. FT. (21 SQ. M) PER MACHINE.
 6. TOP OF MACHINE BEAMS SHALL BE FLUSH WITH OR BELOW MACHINE ROOM FLOOR SLAB.

CAR WITH FRONT AND REAR ENTRANCES
NOTE: AVOID REAR ENTRANCE WHERE POSSIBLE.



DETAIL TITLE / ELEVATOR, SERVICE
5000 LB. CAPACITY
(HORIZONTAL SLIDING CENTER OPENING DOORS)

SCALE : NONE

DATE ISSUED :DECEMBER 2008

CADD DETAIL NO. : SD142100-03.DWG