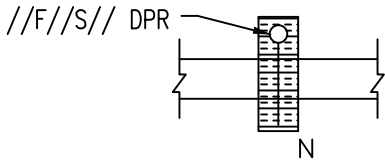
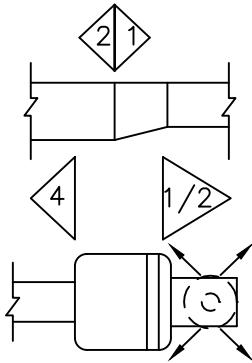


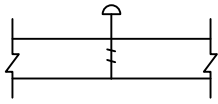
DUCTWORK SYMBOLS



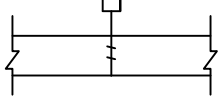
//FIRE//SMOKE// DAMPER
(VA DOES NOT ALLOW COMBINATION FIRE/SMOKE DAMPERS.)



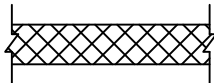
POINT OF CHANGE IN DUCT CONSTRUCTION BY STATIC PRESSURE CLASS. THE NUMBER ASSIGNS PRESSURE CLASS (IN. OF WATER) WHICH WILL ACCOMMODATE MAXIMUM OPERATING PRESSURE IN THE DUCT SUBSECTION. THE SYMBOL CONTINUES THE ASSIGNMENT UNTIL THE DUCT TERMINATES OR ANOTHER SYMBOL APPEARS. A "N" SUPERSCRIPT INDICATES NEGATIVE PRESSURE.



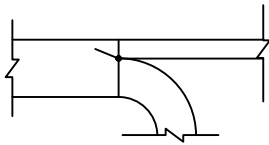
AUTOMATIC CONTROL DAMPER MODULATING



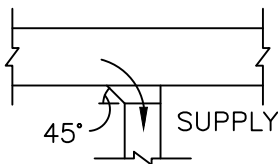
AUTOMATIC CONTROL DAMPER TWO POSITION



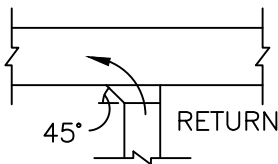
STAINLESS STEEL DUCT



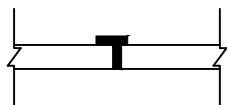
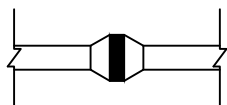
MANUAL SPLITTER DAMPER



STANDARD BRANCH SUPPLY OR RETURN, NO SPLITTER (45° TAP)



DUCT MOUNTED COIL (HOT WATER OR STEAM COIL)



DUCT MOUNTED COIL
(ELECTRIC)



Department of
Veterans Affairs

DETAIL TITLE: DUCTWORK SYMBOLS

SCALE :NONE

DATE ISSUED: 11/01/2017

CAD DETAIL NO.: SD230511-11.DWG