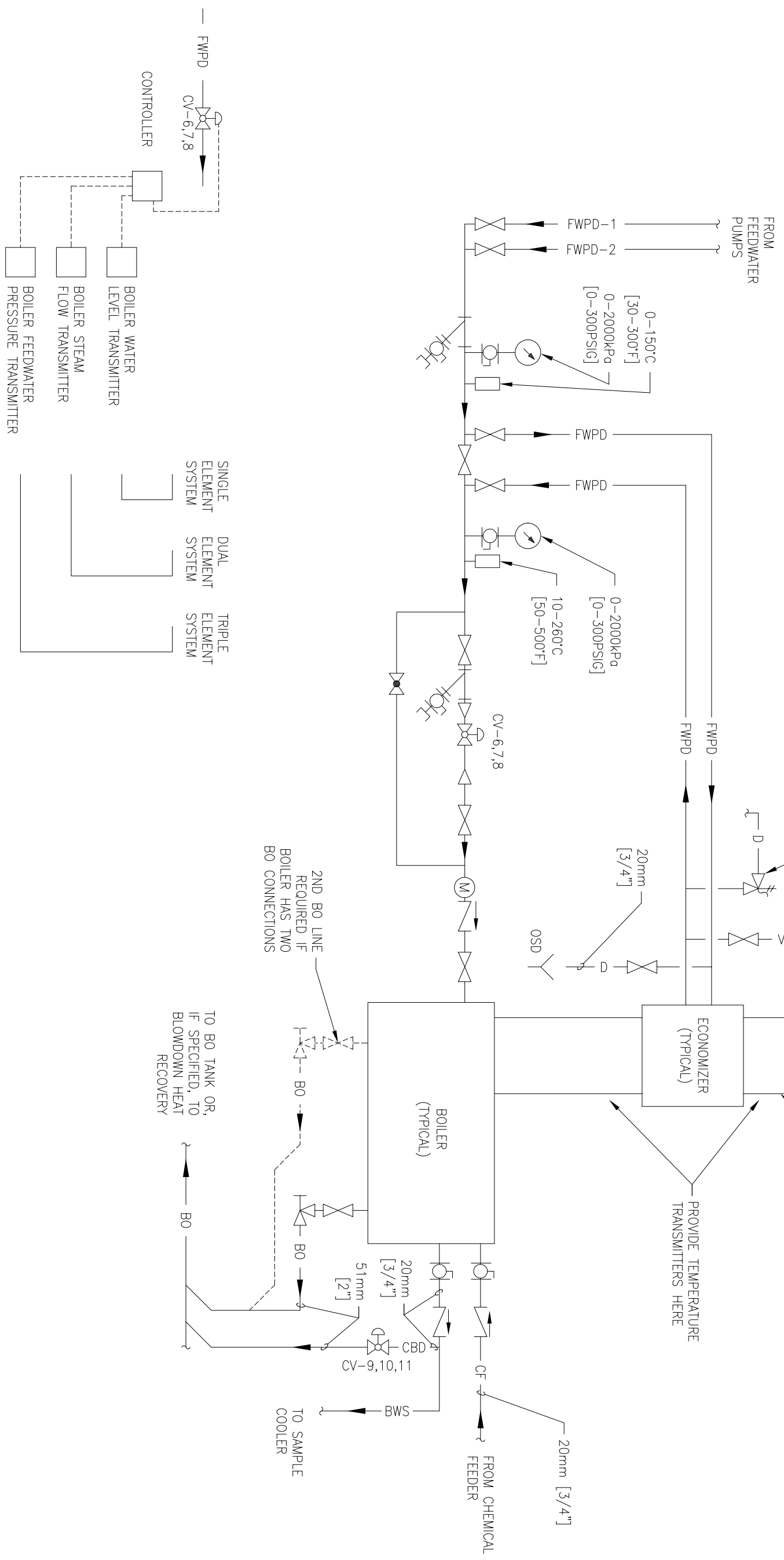
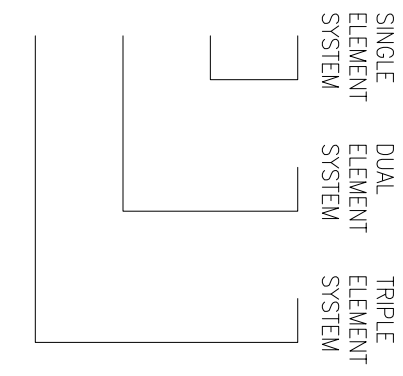


THIS RELIEF VALVE IS HOT WATER UNDER PRESSURE AND SHOULD BE VENTED DOWN TO THE FLOOR TWO INCHES ABOVE FLOOR DRAIN OR IN A TRENCH DRAIN IS PREFERRED. LIKE A SAFETY VALVE ON A HOT WATER HEATER.



BOILER WATER LEVEL CONTROL SCHEMATIC
(SEE SPECS FOR TYPE OF SYSTEM)



BOILER FLOW DIAGRAM

NTS