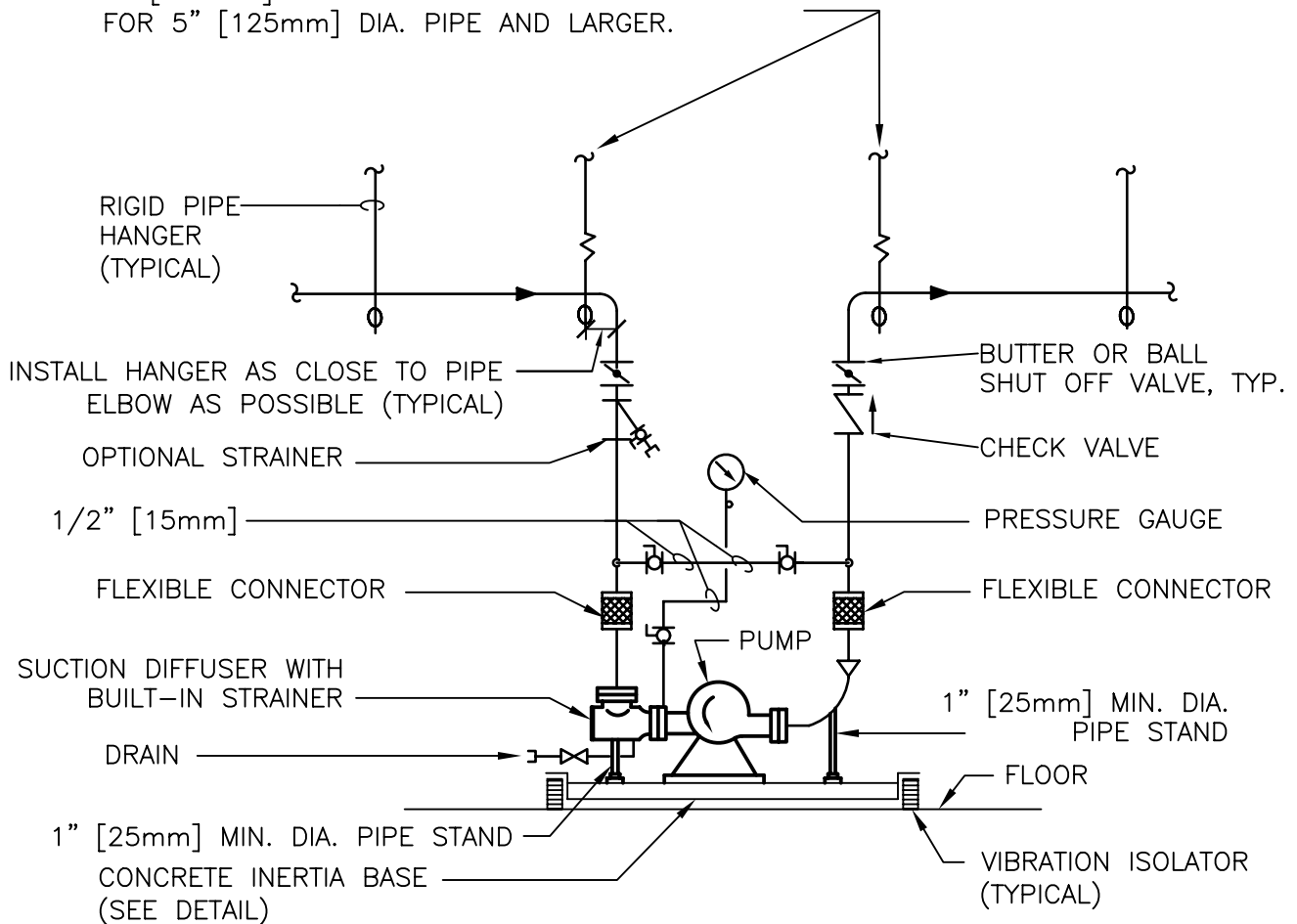


FIRST 3 HANGERS FOR EACH PIPE AND BRANCH SHALL BE SPRING & NEOPRENE TYPE. TYPE "H" FOR 4" [100mm] DIA. PIPE AND SMALLER. TYPE "H-P" FOR 5" [125mm] DIA. PIPE AND LARGER.



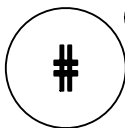
NOTE:

SEE SPECIFICATION SECTION "PUMPS" FOR Y STRAINER OPTION.

DESIGNER'S NOTE:

CHECK VALVE IS OPTIONAL FOR SINGLE PUMPS, EXCEPT FOR COOLING TOWER PUMP.

DOUBLE SUCTION FLOOR-MOUNTED PUMPS - CONNECTIONS WITH FLEXIBLE CONNECTORS



NTS



Department of
Veterans Affairs

DETAIL TITLE / DOUBLE SUCTION FLOOR-MOUNTED PUMPS -
CONNECTIONS WITH FLEXIBLE CONNECTORS

SCALE :NONE

DATE ISSUED :DECEMBER 2008

CADD DETAIL NO. : SD232123-04.DWG