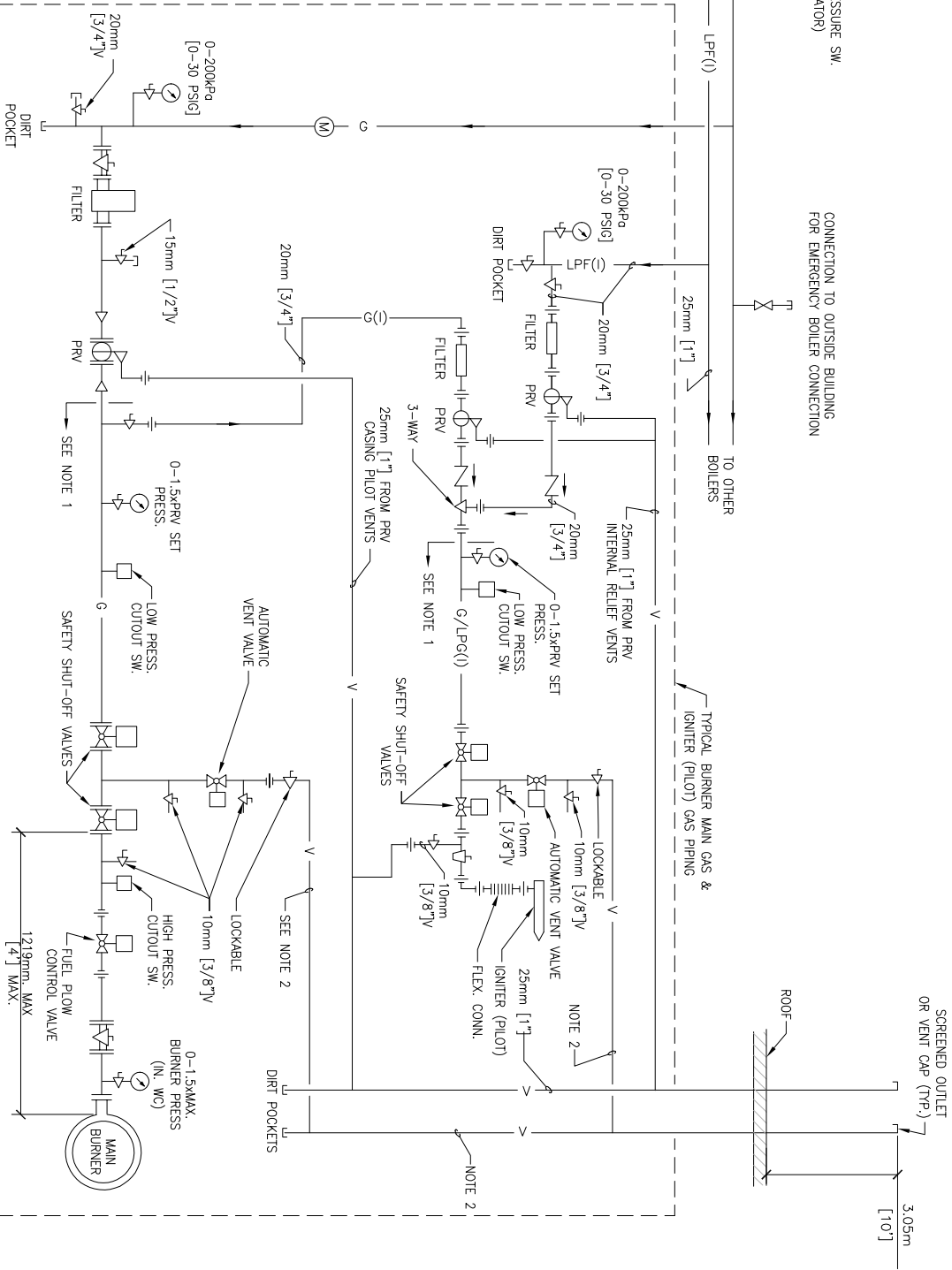
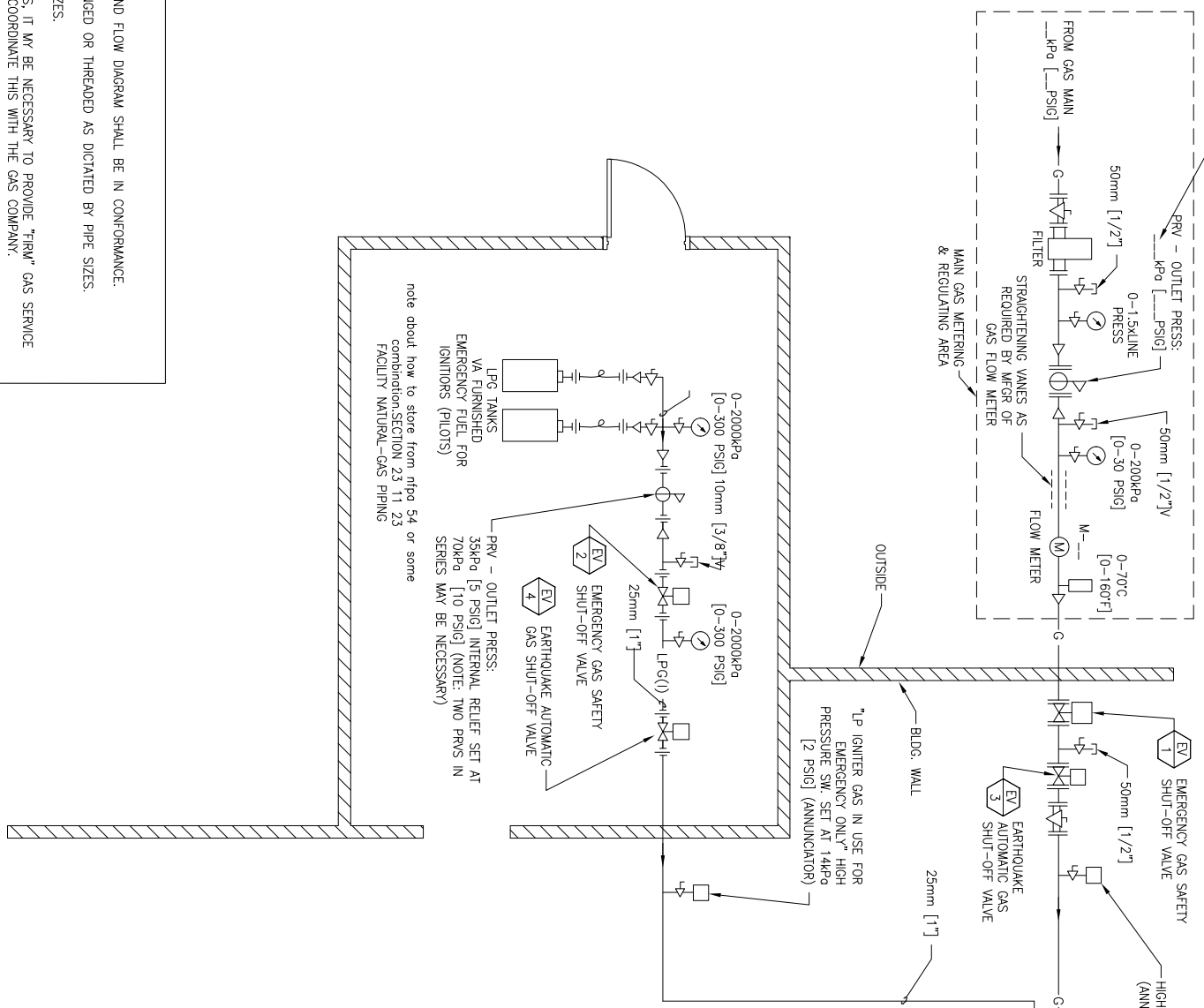


DESIGNER NOTE:  
 SET PRESSURE:  
 35kPa [5 PSIG] FOR FIRE TUBE  
 BOILERS, 70kPa [10 PSIG] FOR WATER  
 TUBE BOILERS. (HIGHER PRESSURE MAY  
 BE REQUIRED FOR LOW-NOX BURNERS).



NOTES:  
 1. PIPING SIZED BY BURNER MFR. TO SUIT FLOW REQUIREMENTS & AVAILABLE PRESSURE.  
 2. SIZE AUTOMATIC VENT VALVES & VENT PIPING AS FOLLOWS:

FUEL S90 VALVE SIZE mm [in]	VENT SIZE mm [in]
15-40 [1/2 TO 1-1/2]	20 [3/4]
50 [2]	25 [1]
65-75 [2-1/2 TO 3]	32 [1-1/4]
100-125 [4-5]	50 [2]
150 [6]	65 [2-1/2]

3. VENT HEADER SAME SIZE AS MAIN BURNER VENT.  
 4. ENSURE VENTS ARE AT LEAST 7.62m [25 FEET] FROM ANY INTAKES.  
 5. REFERENCE NFPA 54, NATIONAL FUEL CODE AND NFPA 58, STANDARD FOR THE STORAGE AND HANDLING OF LP-GASES AS THIS IS DUAL FUEL AND LP-GAS TANKS WILL BE STORED IN THE BUILDING.

- DESIGNER'S NOTES:
1. PROJECT DESIGN AND FLOW DIAGRAM SHALL BE IN CONFORMANCE.
  2. SHOW VALVES FLANGED OR THREADED AS DICTATED BY PIPE SIZES.
  3. SHOW ALL PIPE SIZES.
  4. IN SOME LOCATIONS, IT MAY BE NECESSARY TO PROVIDE "TRIM" GAS SERVICE TO THE IGNITERS. COORDINATE THIS WITH THE GAS COMPANY.
  5. DELETE "DESIGNER NOTES" FROM PROJECT DRAWINGS.
  6. EARTHQUAKE VALVES REQUIRED IN SEISMIC AREAS ONLY. REFER TO THE TITL. H-18-8, "SEISMIC DESIGN REQUIREMENTS".
  7. ADD THE SYMBOLS AND ABBREVIATIONS SHOWN ON THIS AND ALL DETAILS TO THE DRAWING LEGEND.
  8. MAY BE INSTALLED BY GAS CO. ON SOME PROJECT.

# NATURAL GAS AND LIQUEFIED PETROLEUM GAS - BURNER AND IGNITER FUEL STANDARD PIPING DIAGRAM  
 NTS